

User Guide AeroSkull XS

- 1 Preface by MusicLife Ltd.
- 2 In the box
- 3 Product Description of the AeroSkull XS®
- 4 AeroSkull XS® Quick Start
- 5 Operating the AeroSkull XS®
- 6 Led Light Indicator
- 7 Maintenance and Care
- 8 First Help before assistance
- 9 Safety Instructions
- 10 Appendix I – AeroSkull XS® Guarantee
- 11 Appendix II – Product Questions & Answers
- 12 Appendix IV - Firmware Upgrade
- 13 Appendix V – Trademarks

Preface by MusicLife Ltd.

Jarre Technologies®, founded by the musical legend, Jean Michel Jarre has unveiled its latest speaker system, the AeroSkull XS. Uniquely designed to arouse fascination and curiosity, the AeroSkull XS is a monument to design, power and precision.

Optimal sound quality goes hand in hand with design at Jarre Technologies®. The AeroSkull XS features two 3 Watt speakers hidden behind sunglasses with an impressive 6 Watt Sub Woofer covering the whole of the back of the skull as well as 1% THD (Total Harmonic Distortion), to deliver an uncompromising listening experience.

Jean Michel Jarre first used the image of the skull in 1976 on the cover of his world renowned album, Oxygene which sold over 15 million copies. He says, "For me, the skull symbolises the perfect acoustic instrument it is the sound box for word, song and music."

The AeroSkull XS is compatible with a large range of devices (see [Compatible Devices](#) for details) and a jack cable can also connect to any Mp3 player, computer or CD/DVD player. Bluetooth simplifies connection to any smartphone, laptops and any other Bluetooth . NFC devices can easily pair the Bluetooth of their phones via the One Touch Pairing feature.

In the box

- AeroSkull XS
- 3.5 mm audio cable
- OTG cable for software update.
- AC Power Adapter
- Lanyard
- Quick User-guide

Product Description of the AeroSkull XS®

Technical Specification

- Bluetooth®, Compatible Bluetooth profiles: A2DP, AVRCP, HFP
- APTX - For lose-less audio wireless streaming
- NFC for Bluetooth® pairing
- Noise Cancellation Microphone
- Line-in 3.5 mm port
- Line-out 3.5 mm port
- Micro USB for Firmware update.

AeroSkull XS® Quick Start

To start, plug the AeroSkull XS® to the power supply and the first time, charge it for at least for 12 hours. To Power ON press and hold for few seconds the power button located between the sun glasses of the speaker. [\(image how to plug the socket\)](#)

On Power ON the white LED will turn ON. Press the Power button once to initialise the Bluetooth. The Blue LED located on the tooth will start pulsing to indicate that the AeroSkull XS® Bluetooth is ON and ready to connect.

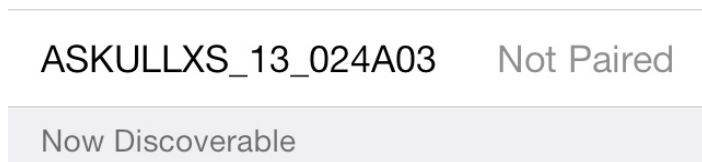
4.1. Using Bluetooth

To stream music to the AeroSkull XS® using Bluetooth® simply connect your bluetooth device to the AeroSkull XS® and press play on your device.

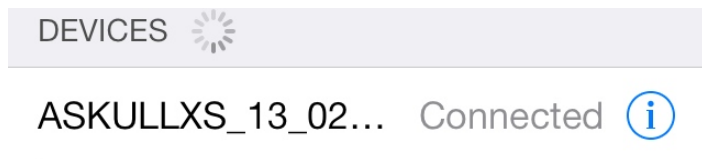
4.1.1. Connect to iPhone® or iPod®

To enable this feature, perform the following steps [\(image how to connect via Bluetooth iOS\)](#)

- Go to Settings on your iOS device.
- Look for General in the list
- Then under General go to Bluetooth;
- Make sure Bluetooth is On;
- Under Devices you should see something like this ASKULLXS_XX_XXXXXX Not Paired (X stands for letters or number, this may change for each device). See image below for more details



- Tap the list item ASKULLXS_XX_XXXXXX to connect. Your device will show that AeroSkull XS® is connected as in the example below.



4.1.2. Connect to Android Phones

To use this feature, perform the following steps:

- Go to Settings
- Tap on Bluetooth
- Turn On the Bluetooth
- Look for AeroSkull XS in the list of Available Devices.
- Tap on the list item AeroSkull XS to pair and connect.

4.1.3. Connect to your Apple® Laptop or Desktop

Turn on Bluetooth on your computer.

- On Desktop top navigation bar click on the Bluetooth icon and from the Bluetooth dropdown select Set Up Bluetooth Device
- From the list of devices select AeroSkull XS and press Continue, wait for the confirmation message
- Go back to the Bluetooth dropdown on the navigation bar.
- Roll over the AeroSkull XS on the list, another dropdown will appear.
- Select Use as Audio Device.
- Now you can play the audio of your computer directly from the speaker.

Once connected the Bluetooth the Blue Led light will turn on.

4.1.4. Connect Using NFC

If your device supports NFC just tap your device on the top part of the AeroSkull XS® until you hear the pairing sound or you will receive a message on screen on your device that the AeroSkull XS® was successfully paired. [\(image: AeroSkull XS NFC pairing\)](#)

Operating the AeroSkull XS®

Volume Control

Volume control is located on the teeth of the AeroSkull XS® (image: Show the volume control of AeroSkull XS) . The Volume can be increased or decreased by simply pressing either +button for volume up or - button for volume down.

Led Light Indicator

AeroSkull XS® has Four LED light indicators, GREEN BLUE RED WHITE

The Blue LED is located on the lower tooth beside the Minus button. The other LEDs are all located between the glasses below the Power button (image: show LED location on AeroSkull XS)

Led Specifications

Mode	LED Action
Power ON	White LED STEADY ON for 2 seconds
Power OFF	Red LED flashes once (Breathing effect)
Stand by mode (Sleeping mode)	White LED ON Breathing effect 1 second
A2DP AAC	Blue LED steady ON
A2DP SBC	Blue LED steady ON
A2DP aptX	Blue LED steady ON
Line-in mode	White LED is ON
Bluetooth mode (When Charging)	Blue LED Breathing effect 3 seconds
Line-in mode (When Charging)	White LED Breathing effect 3 seconds
Low Battery Indicator	25% > Battery level >= 10%, 2 Seconds Breathing Red LED for 6 seconds every one minute Battery level < 10%, 1/2 Second blink Red LED for 6 seconds every one minute
Battery fully charged (When charging on Line-in or Bluetooth)	Green LED steady ON
Battery Charging (Only when no input)	Batter level >= 90%, Steady Green LED 90% > Battery level >= 60%, 3 Seconds Breathing Green LED 60% > Battery level >= 25%, 3 Seconds Breathing White LED 25% > Battery level >= 10%, 3 Seconds Breathing Red LED Battery level < 10%, 1/2 Second blink Red LED

Input Mode

AeroSkull XS® supports 2 kinds of input mode Bluetooth and Line-in mode

Bluetooth mode

To enable Bluetooth turn On AeroSkull XS and Press the Power button to send it into pairing mode (Newer version of the firmware will send the product automatically in Bluetooth. Check to support website for more details support.jarre.com). Then access Bluetooth on your device and go to the list of available devices. Look forAeroSkull XSbetween the list of the available devices then select AeroSkull XS to connect to the speaker. If AeroSkull XS does not appear on the list, please turn your speaker Off and then back On. Once you have successfully connected to the AeroSkull XS, the Blue LED Light Indicator located on the tooth of the AeroSkull XS will show a steady blue color, you will now be able to stream audio.

If your bluetooth device support NFC you will be able to use the feature One Touch Pairing by tapping your NFC device on the top of the AeroSkull XS (Close to the Power button). The NFC sensor is located in front of the Power button.

Line-in mode

To enable line-in mode you can connect a 3.5mm jack to the AeroSkull XS® and play audio directly from your favourite device. Line-in port is located at the back of the AeroSkull XS® next to the Micro USB port. (image: Line-in at the back of the AeroSkull XS)

Output Mode

Line-out mode

AeroSkull XS® also supports Line-out feature so you can link many AeroSkull XS® together for a louder sound. The line-out is located at the back of AeroSkull XS® next to the Micro USB port.(image: Line-out at the back of the AeroSkull XS)

Maintenance and Care

Maintenance may include periodically cleaning the AeroSkull XS®.

8.1. Cleaning

Turn off the AeroSkull XS® and unplug it before cleaning.To clean the exterior, use a soft, dry cloth.

DO NOT USE SOLVENTS OR SPRAYS.

DO NOT ALLOW LIQUIDS TO SPILL OR OBJECTS TO DROP INTO ANY AeroSkull XS® OPENING.

8.3. Battery precautions

- The battery must not be open.
- The battery must not be short circuit.
- The battery cannot be replaced.



CAUTION


There is a danger of explosion if battery is incorrectly handled. Do not put the product into fire as it may explode or leak.

Place the AeroSkull XS® on a flat and stable surface. It should not stand in direct sunlight or near water sources, humidity sources, heat, dust, vibrations or high magnetic fields. To ensure the best sound quality from your AeroSkull XS®, we strongly recommend a compression rate of 256kb or higher for all mp3 or wma files.

First Help before assistance

Troubleshooting for your product


If you have any questions regarding the compatibility of your iPod®/iPhone® product with the AeroSkull XS®, visit support.jarre.com for the most updated information.

Problem	Possible Cause of the problem	Possible solutions
Do not hear any sound from the AeroSkull XS®	No Power	Make sure the battery is charged and the ON/OFF switch is hold down for 2 seconds.
	The volume level is too low	Increase volume by pressing the  button.

	Your streaming device does not have songs in memory or it does not work	Check other inputs like Line-in; if OK, check with another products
	The streaming device is in < stop > mode or < pause > mode	Check on the streaming device screen that the song track is playing
	The Mode you are trying to use is not the correct one	Make sure the streaming device is connected correctly. In case you are using Bluetooth make sure you are connected to AeroSkull XS. If using Line-in make sure the 3.5mm cable is plugged in Line-in port.
The product does not switch on	The battery is out of power	Connect AeroSkull XS to the AC Power Adapter to charge the device.
I cannot pair Bluetooth using NFC	The device you are trying to use may not be NFC	Make sure the device you are using is actually NFC
	The sensors of your device and the AeroSkull XS® are not close enough to each other.	Check the exact location of the NFC sensor on you device and on the AeroSkull XS®

Safety Instructions


	Important information related to the safety of the product
---	--

 To prevent electrical shocks never try to open the product.

In order to prevent fire and electrical shock, do not use the power cord with extension, socket of any other accessories except if the plug can be completely inserted and the electrical pin are not accessible. In order to prevent any risk of fire or electric shock, do not expose the product to rain or humidity.


Power Supply

This product is designed to work with Li Polymer Batteries.

 Connecting this product with a different source of power can damage the product. Use only the power supply provided with the product.

Use only power supplies listed in the user instructions

Important Notices




 Read, follow and keep the instruction manual for reference.


1. Clean the product only with a soft and dry fabric. Never use liquid cleaning products as it will damage the speaker.
2. Avoid placing the product in a location under the sunlight or near any appliance that generates heat such as an electric

heater or above other Hi-Fi product that will generate heat. Avoid locations that lack ventilation are dusty, humid or exposed to vibration.

3. When charging the product make sure the charging cable is plugged correctly.
4. Use only spare parts and accessories specified by the product manufacturer.
5. Unplug the product during storms or when the product won't be used for a long period of time.
6. Contact a qualified worker for maintenance on the product. Maintenance will be needed if the product has any damage.
7. To reduce the risk of fire or electrical shock, this product should not be exposed to drop of water spray. Never try to open the product by yourself.
8. Use the control switch and buttons as per stated in the instruction manual.

Important information related to environment

	<p>This symbol on the product or on its packaging indicates that this product must not be disposed of with your other household waste. Instead, it is your responsibility to dispose of your waste equipment by handing it over to a designated collection point for the recycling of waste electrical and electronic equipment. The separate collection and recycling of your waste equipment at the time of disposal will help to conserve natural resources and ensure that it is recycled in a manner that protects human health and the environment. For more information about where you can drop off your waste equipment for recycling, please contact your local city office, your household waste disposal service or the shop where you purchased the product.</p>
	<p>This symbol is printed on batteries or packaging; it means that the batteries delivered with your product should not be proceed like other domestic waste.</p>
	<p>This product is designed for indoor use only.</p>

 Author copyright
The music data transferred/recorded cannot be used without the approval of the owner of the right except for personal use.

Appendix I – AeroSkull XS® Guarantee

AeroSkull XS® ships with two years warranty.



Appendix II – Product Questions & Answers

The following section presents questions and answers about the functionality of the product.

Q. Where is the NFC sensor?

A. The NFC sensor is located in front of the POWER button.

Q. How can I find out the battery level of the AeroSkull XS®?

A. Press  and  button at same time to find out the battery level.

Appendix IV - Firmware Upgrade

MCU Update



Important


Note that the file name must be named `skullmcu.bin`. The system will not recognise the file if it is named differently. If the file you have is named in a different way, rename it to `skullmcu.bin`

Update procedure

For the steps of performing USB firmware update for MCU.

- Plug the power supply into the unit.
- Turn On the product by pressing the Power button.
- Connect the Thumb drive (USB Stick) containing the "skullmcu.bin" file to the Micro USB - USB OTG cable.



- Connect the cable to the micro USB port located on the Speaker.
- Press and hold at the same time the power button and the plus button  for 3 seconds.
- Release the button as soon as the white LED will quickly flash
- Press the Power button to start the product again.

Know update failures

	Possible solutions
The white LED is steady ON after I have done the update.	<ul style="list-style-type: none"> • Make sure the file is named correctly <code>skullmcu.bin</code> • There should be no other file in the memory stick apart then <code>skullmcu.bin</code> • Make sure your memory stick has been formatted as FAT32

FAQ

Where can I find the latest Firmware update file?

You can find the latest firmware on our support website. support.jarre.com

Where can I get an OTG cable?

You can find it:

- at specialized electronics shop
- on internet, just look for OTG cables that support data transfer.


My OTG cable is not working, why?

Your OTG cable may be damaged or not supporting data packages.

Where can I get more info on how to update my Speaker?

Please visit our support website support.jarre.com

Media contents

 To be released

Bluetooth Update

System Requirements

Here are the critical system requirement for the software update.

- Windows XP, Windows Vista (If you run Vista you may need to install the following package [ivt_bt_6271214_win732.exe](#))
- USB port on your computer.
- CSR DFU Wizard (you can find on our support website).



Important

Note that the file name must have the following extension `.dfu`. The system will not recognise the file if it is named differently. The name of the file has not impact on this process.

Step 1 - Get your AeroSkull XS Ready for update

For the steps of performing USB firmware update for MCU.

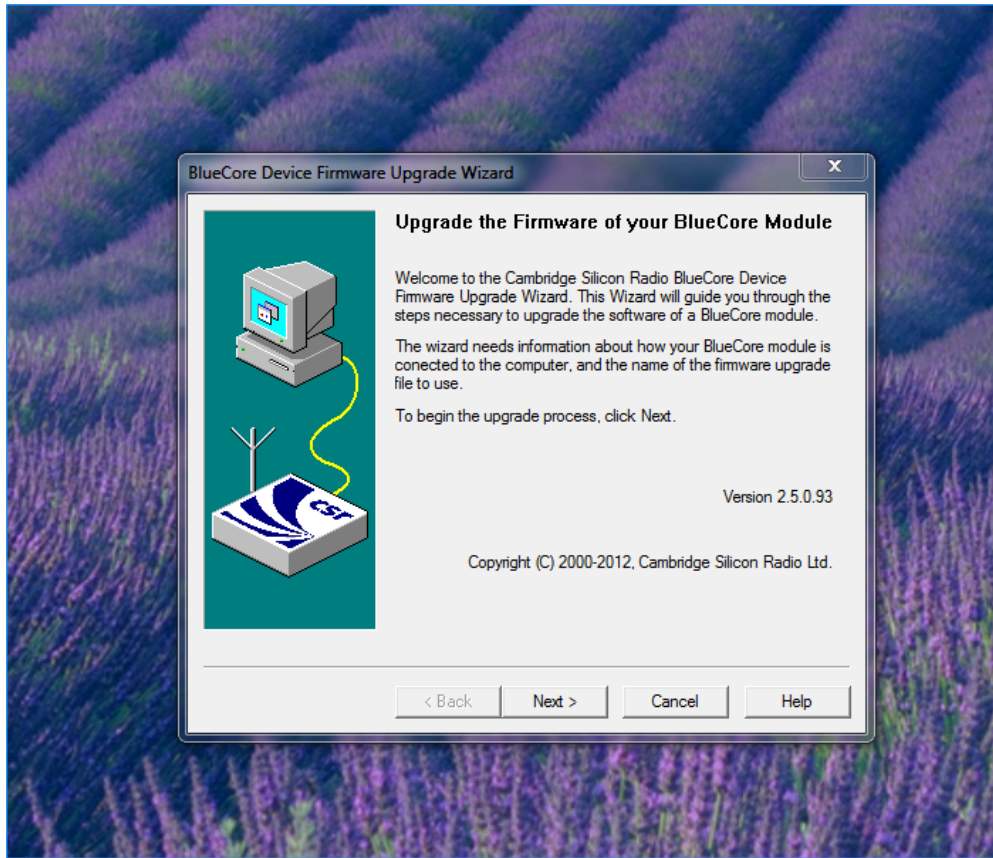
- Turn the AeroSkull XS On by pressing the power button.
- Using the USB cable provided with AeroSkull XS, connect AeroSkull XS to the Computer running Windows. (Below and example of the USB Cable)



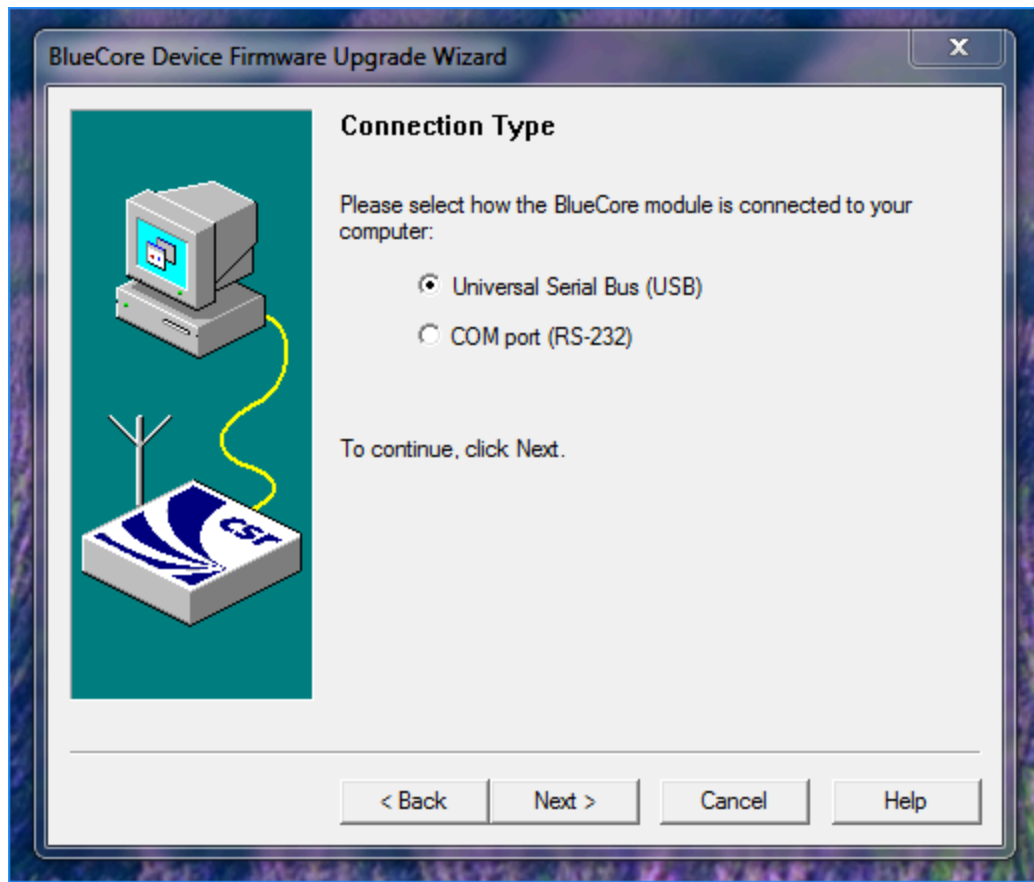
- Press and hold at the same time the Minus and the Power button for 3 seconds.
- On your Windows Computer you will see an addition to your USB devices.
- If you see a new device added to your Windows computer USB. Congratulations, your AeroSkull XS is now connected to your computer and ready to be updated.
- If you have issues please contact your reseller or contact us at support@jarre.com

Step 2 - Update AeroSkull XS Bluetooth

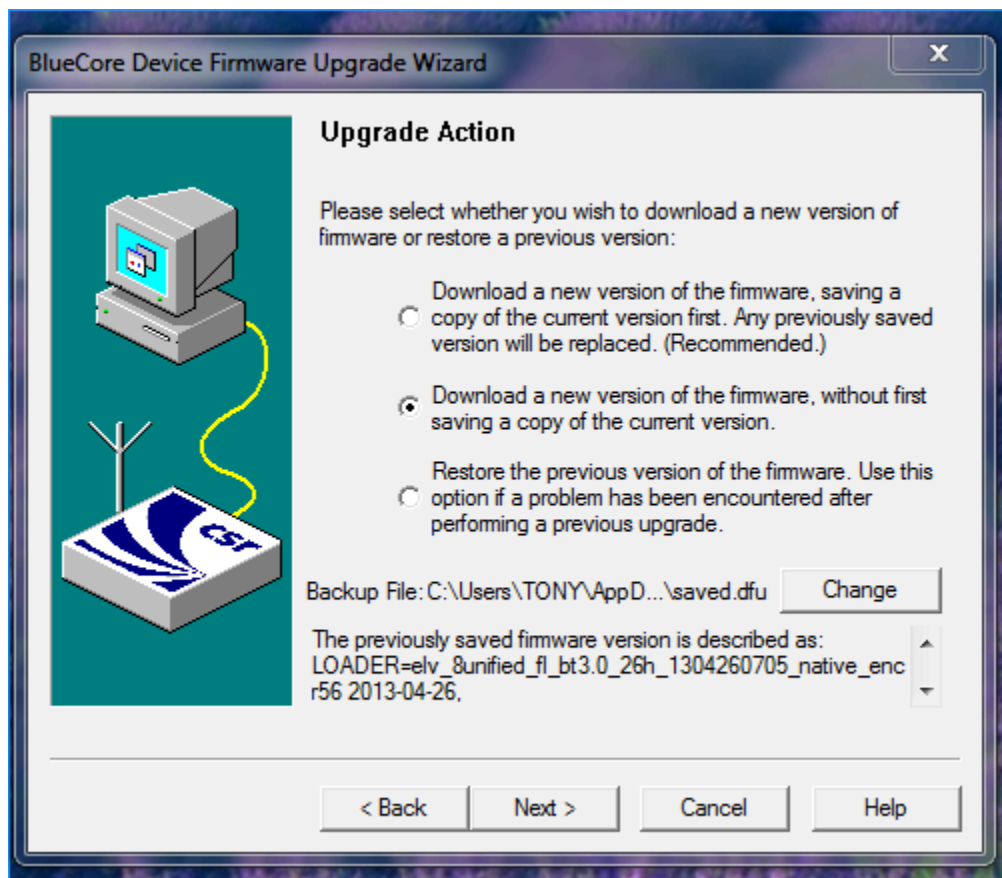
- Make sure you have all the software tools for the upgrade. See the note above for more details.
- Install CSR DFU wizard
- Download the firmware update file and save it on your Desktop. Note, the file extension in this case is .dfu.
- On your computer go to Start menu and then Programs, there you will find the CSR DFU wizard. Click to Open. You will have the image as below



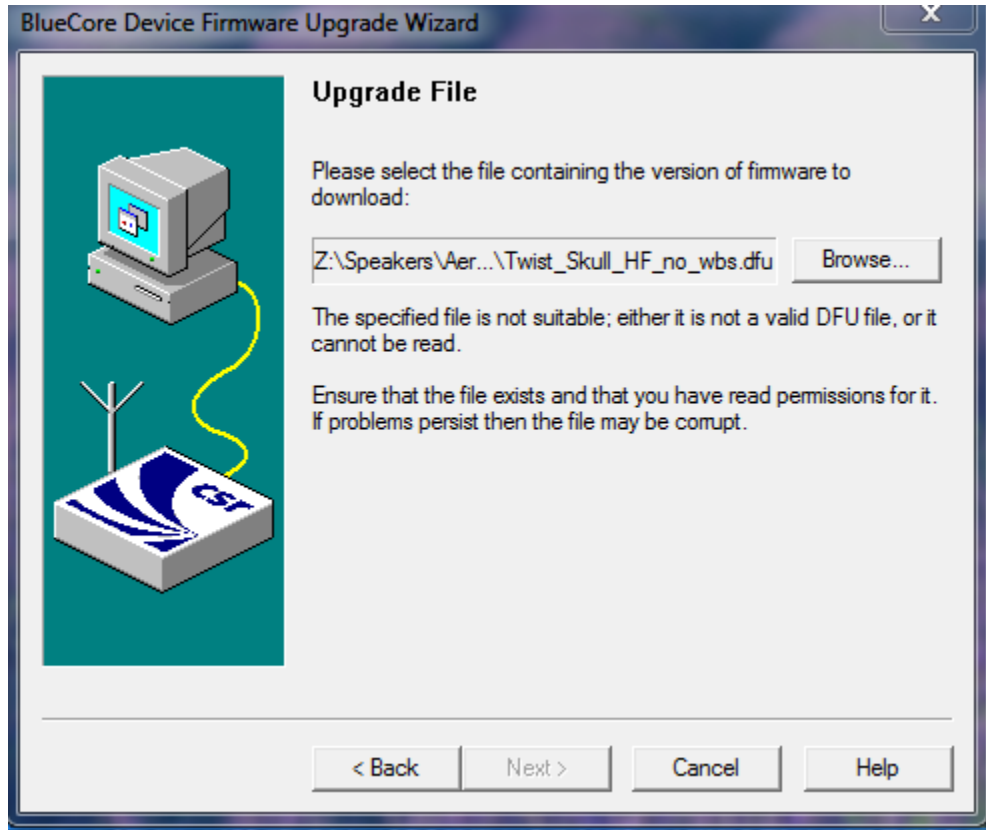
- Press Next to continue the wizard.



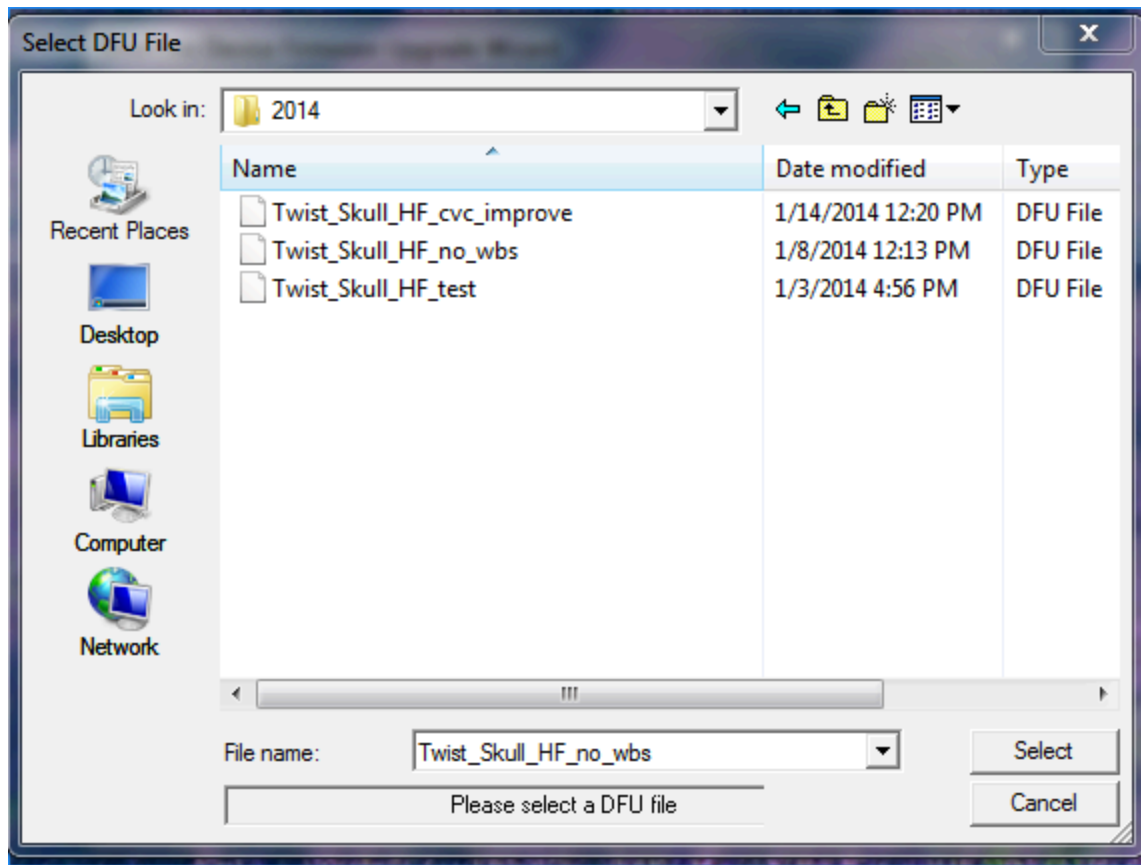
- If not already selected Choose USB from the list



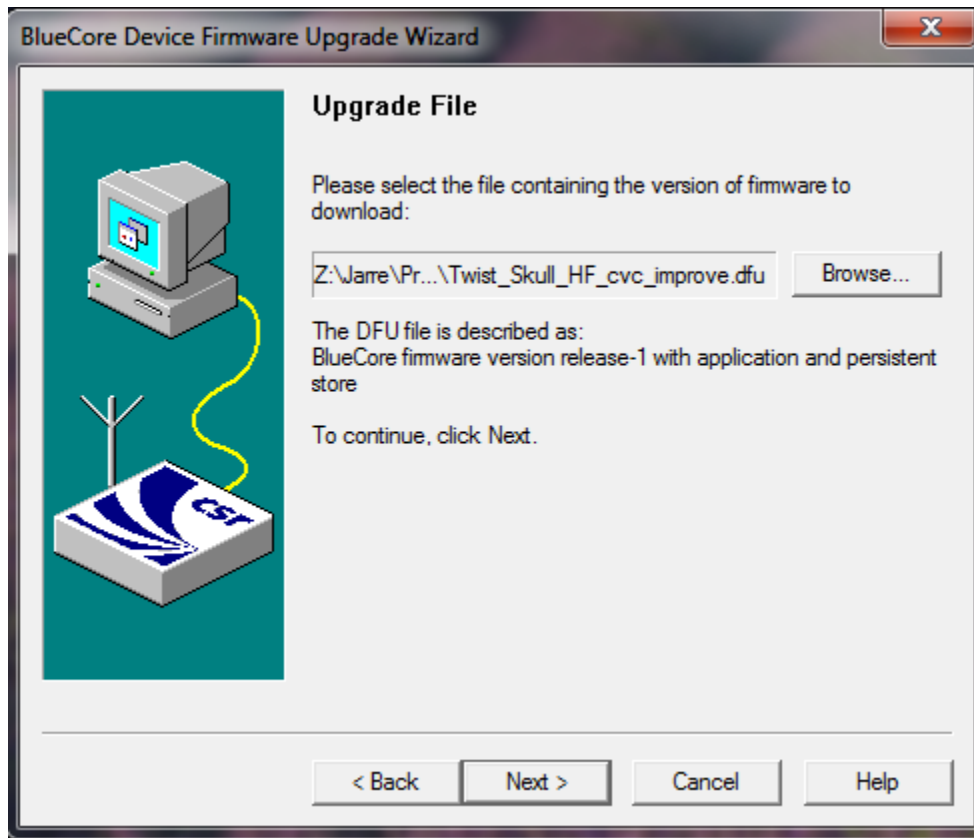
- If you managed to get here without any problems it means that you connected your AeroSkull XS correctly. From the list choose "Download a new version of the firmware, without first saving a copy of the current version an click Next.



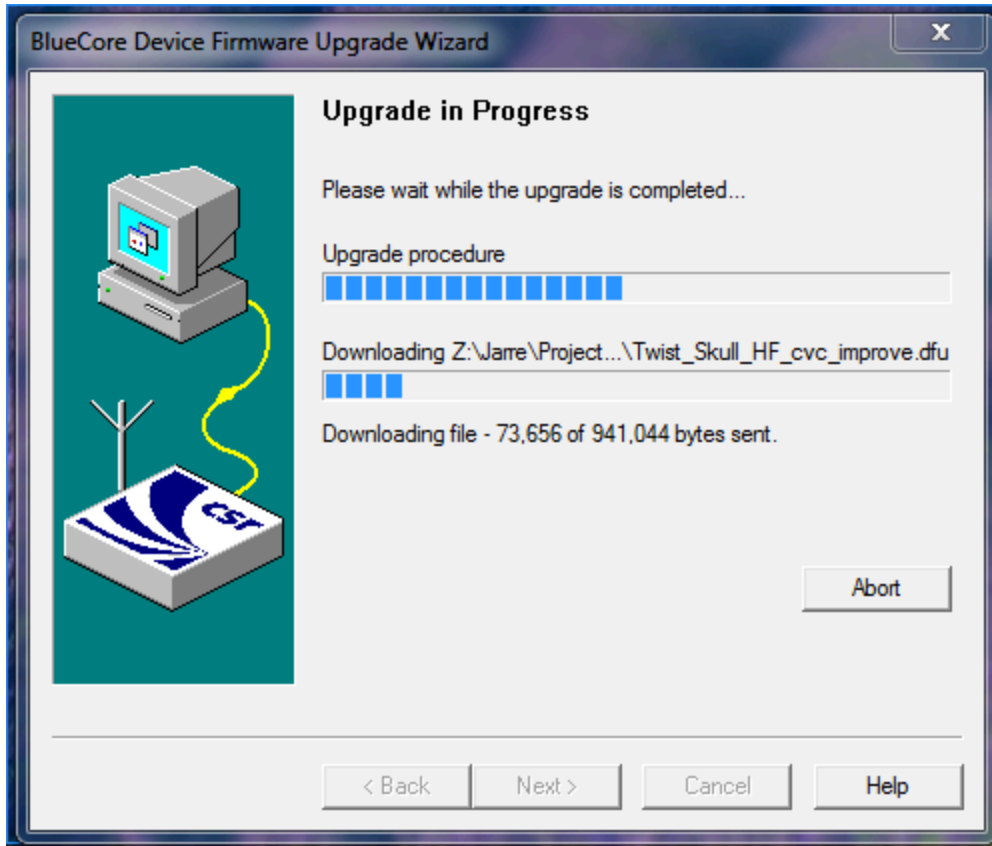
- Click on Browse to select the .dfu that you just saved on the desktop. Note the name of the file is not relevant in this case but what is important is the extension.



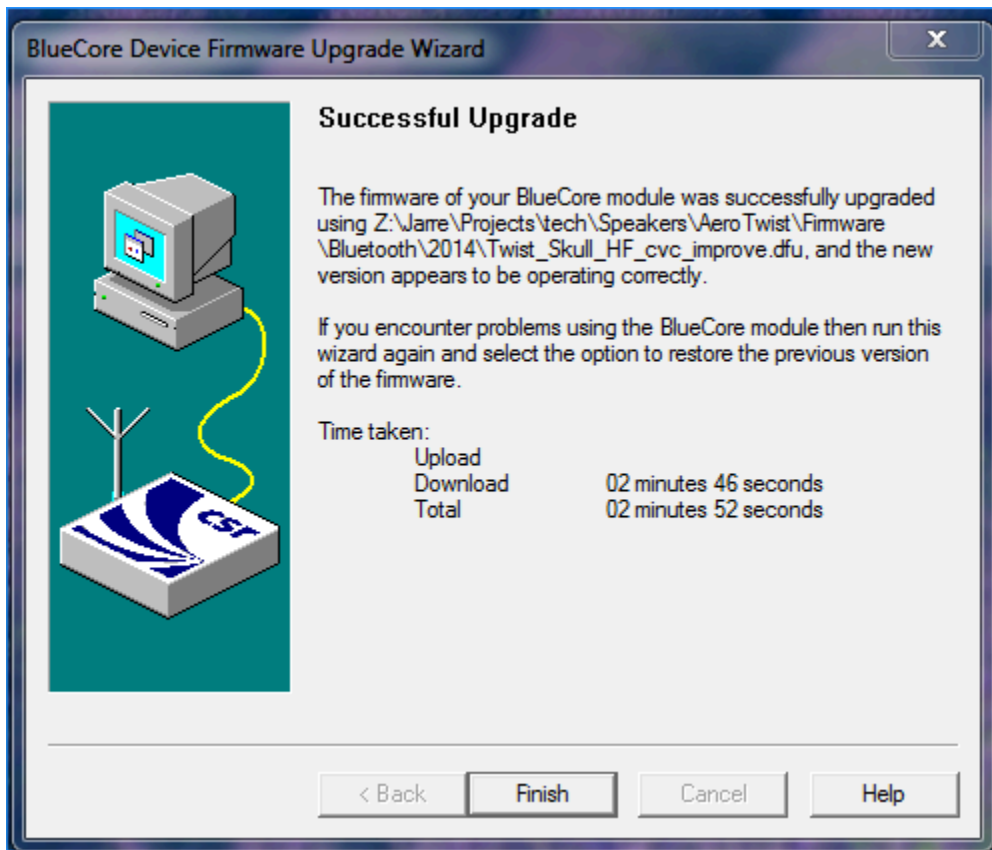
- Select the dfu file from the list and press select.



- Press Next to start the upload.



- It will take about 2 minutes to finish the update.



If you have the above screen the update was successful and the AeroSkull XS will restart automatically. You can now disconnect the USB cable from both your computer and AeroSkull XS.

If you have issues at this stage then repeat Step 1 from the beginning.

Know update failures

	Possible solutions
AeroSkull XS is not upgrading	<ul style="list-style-type: none"> • Make sure you are using Windows. • Make sure the file has the correct extension <i>.dfu</i> • Make sure you are following the procedure correctly.

FAQ

Where can I find the latest Firmware update file?

You can find the latest firmware on our support website. support.jarre.com

Where can I get an USB cable?

You can find it:

- at specialized electronics shop
- on internet, just look for Micro USB to USB Cable



Where can I get more info on how to update my Speaker?

Please visit our support website support.jarre.com or contact us at ashd.support@jarre.com

Media contents

 To be released
--

Appendix V – Trademarks

	<p>The Bluetooth® word mark and logos are registered trademarks owned by Bluetooth SIG, Inc. and any use of such marks by Music Life LTD is under license. Other trademarks and trade names are those of their respective owners.</p>
	<p>aptX® software is copyright CSR plc or its group companies. All rights reserved. The aptX® mark and the aptX logo are trademarks of CSR plc or one of its group companies and may be registered in one or more jurisdictions</p>